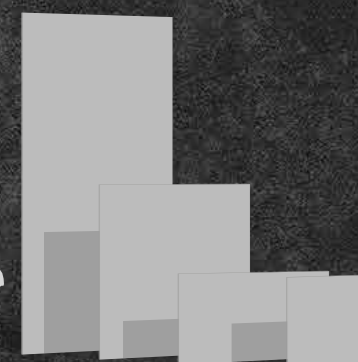
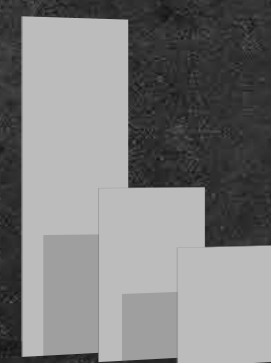


4 COLOURS  
7 SIZES\*  
SOFT FINISH  
6mm THICKNESS

\* 320x160 on request

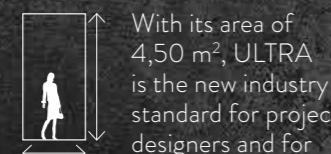


300x150  
STARTING SIZE



300x100  
STARTING SIZE

## ULTRA TECHNOLOGY PLUS



ULTRA SIZE

With its area of 4,50 m<sup>2</sup>, ULTRA is the new industry standard for project designers and for all projects where dimensions make the difference. ULTRA con i suoi 4,50 m<sup>2</sup> è il nuovo punto di riferimento per i progettisti e per tutti gli interventi dove le dimensioni fanno la differenza.



TAILORED

ULTRA offers unmatched project flexibility and the freedom to give concrete form to your ideas without being shackled by size. ULTRA offre estrema flessibilità al progetto e la libertà di realizzare le tue idee senza vincoli di formato.



LIGHTEST

Thanks to its native 6 mm thickness, ULTRA provides lightness and strength in all applications - even the ones you'd never even imagined. ULTRA con il suo spessore 6 mm nativo garantisce leggerezza e resistenza per tutte le applicazioni, anche quelle a cui non avevi pensato.

## CARATTERISTICHE TECNICHE TECHNICAL FEATURES / TECHNISCHE EIGENSCHAFTEN / CARACTÉRISTIQUES TECHNIQUES

CLASSIFICAZIONE ENTE CEN SECONDO LE NORME EN - ISO GRUPPO B1a-UGL EN 14411 ALL G E ISO 13006 ALL G / CLASSIFICATION IN ACCORDANCE WITH CEN AND ISO STANDARDS - B1a-UGL EN 14411 ANNEX G AND ISO 13006 ANNEX G / KLASSIFIZIERUNG GEMÄß CEN UND ISO NORMEN GRUPPE B1a-UGL EN 14411 ANL. G UND ISO 13006 ANL. G / CLASSIFICATION SELON LES NORMES CEN ET ISO GROUPE B1a-UGL EN 14411 P.J.G ET ISO 13006 P.J.G

| PROPRIETÀ CHIMICO - FISICHE / CHEMICAL / PHYSICAL PROPERTIES / CHEMISCH / PHYSISCHE EIGENSCHAFTEN / PROPRIÉTÉS CHIMICO - PHYSIQUES        | NORMA / REGULATION / NORMEN / NORME | VALORE PRESCRITTO / REQUIRED VALUE / VORGESCHRIEBENER WERT / VALUER PRESCRITE  | VALORI MEDI ULTRA CON.CREA. / ULTRA CON.CREA. AVERAGE VALUES / ULTRA CON.CREA. DURCHSCHNITTSWERTE / VALEURS MOYENNES ULTRA CON.CREA.   |
|---|-------------------------------------|--|--|
| ASSORBIMENTO D'ACQUA / WATER ABSORPTION / WASSERAUFNAHME / ABSORPTION D'EAU   | ISO 10545-3                         | ≤ 0,5 %  | 0,03% - 0,06%<br>SUPERFICI SOFT / SOFT FINISHES / SOFT OBERFLÄCHEN / SURFACES SOFT   |
| DIMENSIONI / SIZES / ABMESSUNGEN / DIMENSIONS   | ISO 10545-2                         | ± 0,6% max<br>LUNGHEZZA E LARGHEZZA / LENGHT AND WIDTH / LÄNGE UND BREITE / LONGUEUR ET LARGEUR  | ± 0,1%<br>LUNGHEZZA E LARGHEZZA / LENGHT AND WIDTH / LÄNGE UND BREITE / LONGUEUR ET LARGEUR  |
|   |                                     | ± 5% max<br>SPESSORE / THICKNESS / STÄRKE / ÉPAISSEUR  | ± 5%<br>SPESSORE / THICKNESS / STÄRKE / ÉPAISSEUR  |
|   |                                     | ± 0,5% max<br>RETTILINEITÀ SPIGOLI / LINEARITY / KANTENGERADHEIT / RECTITUDE DES ARÊTES  | ± 0,1%<br>RETTILINEITÀ SPIGOLI / LINEARITY / KANTENGERADHEIT / RECTITUDE DES ARÊTES  |
| RESISTENZA ALL'ABRAZIONE PROFONDA / DEEP ABRASION RESISTANCE / TIEFVERSCHLEISSBESTÄNDIGKEIT / RESISTANCE A L'ABRASION PROFONDE            | ISO 10545-6                         | ± 0,6% max<br>ORTOGONALITÀ / WEDGING / RECHTWINKLIGKEIT / ORTHOGONALITÉ  | ± 0,1%<br>ORTOGONALITÀ / WEDGING / RECHTWINKLIGKEIT / ORTHOGONALITÉ  |
|   |                                     | ± 0,5% max<br>PLANARITÀ / WARPAGE / EBENFLÄCHIGKEIT / PLANÉITÉ   | ± 0,2%<br>PLANARITÀ / WARPAGE / EBENFLÄCHIGKEIT / PLANÉITÉ   |
|   |                                     | RESISTENZA AI PRODOTTI CHIMICI / RESISTANCE TO CHEMICAL PRODUCTS / CHEMIKALIENBESTÄNDIGKEIT / RESISTANCE AUX PRODUITS CHIMIQUES  | ISO 10545-13   |
| RESISTENZA ALLE MACCHIE / STAIN RESISTANCE / FLECKENBESTÄNDIGKEIT / RESISTANCE AUX TACHES   | ISO 10545-14                        | METODO DI PROVA DISPONIBILE / TESTING METHOD AVAILABLE / VERFÜGBARES PRÜFVERFAHREN / METHODE D'ESSAI DISPONIBLE  | CONFORME / CONFORMS / KONFORM / CONFORME*  |
| RESISTENZA SBALZI TERMICI / RESISTANCE TO THERMAL SHOCKS / TEMPERATURWECHSELBESTÄNDIGKEIT / RESISTANCE AUX ÉCARTS DE TEMPERATURE          | ISO 10545-9                         | METODO DI PROVA DISPONIBILE / TESTING METHOD AVAILABLE / VERFÜGBARES PRÜFVERFAHREN / METHODE D'ESSAI DISPONIBLE  | RESISTENTE / RESISTANT / BESTÄNDIG / RESISTANT   |
| RESISTENZA COLORI ALLA LUCE / RESISTANCE TO LIGHT / LICHTBESTÄNDIGKEIT DER FARBEN / RESISTANCE DES COULEURS A LA LUMIERE                  | DIN 51094                           | NESSUN CAMPIONE DEVE PRESENTARE APPREZZABILI VARIAZIONI DI COLORE / NO SAMPLE MUST SHOW NOTICEABLE COLOUR CHANGE / KEIN EXEMPLAR SOLL SICHTBARE FARBVERÄNDERUNGEN AUFWEISEN / AUCUN ÉCHANTILLON NE DOIT PRÉSENTER DE VARIATIONS IMPORTANTES DES COULEURS   | CAMPIONI INALTERATI IN BRILLANTEZZA E COLORE / NO CHANGE IN BRIGHTNESS OR COLOUR / GLANZ UND FARBE DER MUSTER UNVERÄNDERT / ÉCHANTILLONS INCHANGÉS EN BRILLANCE ET COULEUR   |
| DILATAZIONE TERMICA LINEARE / COEFFICIENT OF LINEAR THERMAL EXPANSION / LINEARER WARMEAUDEHNUNGSKOEFFIZIENT / DILATION THERMIQUE LINEAIRE | ISO 10545-8                         | METODO DI PROVA DISPONIBILE / TESTING METHOD AVAILABLE / VERFÜGBARES PRÜFVERFAHREN / METHODE D'ESSAI DISPONIBLE  | 6,5X10 <sup>-6</sup> °C <sup>-1</sup>  |
| RESISTENZA AL GELO / FROST RESISTANCE / FROSTBESTÄNDIGKEIT / RESISTANCE AU GEL  | ISO 10545-12                        | NESSUN CAMPIONE DEVE PRESENTARE ROTTURE O ALTERAZIONI APPREZZABILI DELLA SUPERFICIE / NO SAMPLE MUST SHOW ALTERATIONS TO SURFACE / DIE MUSTER SOLLEN WEDER BRÜCH NOCH SCHADEN AN DER OBERFLÄCHE AUFWEISEN / AUCUN ÉCHANTILLON NE DOIT PRÉSENTER DE RUPTURES OU D'ALTERATIONS CONSIDÉRABLES DE LA SURFACE | RESISTENTE / RESISTANT / BESTÄNDIG / RESISTANT   |
| COEFFICIENTE DI ATTRITO / FRICTION COEFFICIENT / REIBUNGSKOEFFIZIENT / COEFFICIENT DE FRICTION  | DIN 51130                           |  | VEDERE I VALORI DEI SINGOLI MATERIALI NELLA COLLEZIONE ULTRA / SEE VALUES FOR SINGLE MATERIALS IN THE ULTRA COLLECTION / NEHMEN SIE EINSICHT IN DIE WERTE DER EINZELNEN MATERIALIEN DER KOLLEKTION ULTRA / CONSULTER LES VALEURS DE CHAQUE MATÉRIAU DANS LA COLLECTION ULTRA |

\* TEST EFFETTUATO SU INK SOFT / TEST PERFORMED ON SOFT INK / TEST DURCHGEFÜHRT AUF INK SOFT / ESSAI EFFECTUÉ SUR INK SOFT

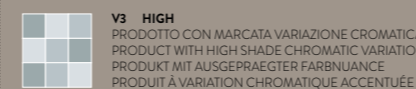
WWW.ARIOSTEA.IT  
ULTRA.ARIOSTEA.IT

AriosteA\_via Cimabue 20  
42014 Castellano  
Reggio Emilia - Italy  
info@ariosteA.it  
Tel. +39 0536 816811  
Fax +39 0536 816838 (Italy)  
Fax +39 0536 816858 (Export)

REIBUNGSKOEFFIZIENTEN, DIE IM KATALOG ODER IN DER TABELLE SAFE SYSTEM AUFGEFÜHRT SIND, SIND ALS UNVERBINDLICHE RICHTWERTE ANZUSEHEN. ALLE SPEZIFISCHEN ANFORDERUNGEN MÜSSEN VON UNS BEI DER BESTELLUNG UND IN JEDEM FALL VOR DER VERLEGUNG IMMER BESTÄTIGT WERDEN.  
-NB- SLIP RESISTANCE VALUES, COEFFICIENT OF STATIC OR DYNAMIC FRICTION, IN THE CATALOG AND IN THE SAFE SYSTEM TABLE ARE PURELY INDICATIVE AND NOT BINDING. ANY SPECIFIC REQUIREMENTS MUST BE CONFIRMED BY US AT THE TIME OF ORDERING AND IN ANY CASE BEFORE INSTALLATION.  
-AMM- DIE WERTE FÜR DIE RUTSCH-FESTIGKEIT, ALSO DES STATISCHEN ODER DYNAMISCHEN

GRADO DI VARIAZIONE CROMATICA / DEGREE OF COLOUR CHANGE / GRAD DER FARBABWEICHUNG / DEGRE DE VARIATION CHROMATIQUE

INK: V3 - CLOUD - V3 - TALC: V3 - EARTH - V3



RETTIFICATO MONOCALIBRO / RECTIFIED SINGLE-CALIBRE / REKTIFIZIERT EINKALIBRIG / RECTIFIÉ MONOCALIBRE

THE CONTEMPORARY  
MOOD OF **CON.CREA.**  
SHAPES YOUR SPACES  
ENHANCING  
THEIR CHARACTER

ULTRA<sup>®</sup> CON.CREA.

ARIOSFEA GREAT SURFACES

IL MOOD  
CONTEMPORANEO  
DI **CON.CREA.** PLASMA  
I TUOI SPAZI  
ESALTANDONE  
IL CARATTERE



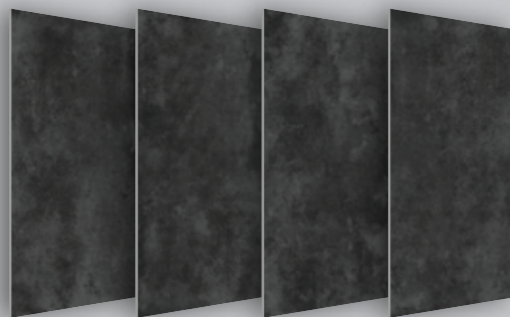
# INK

**300x150** 120"x60"  
**150x150** 60"x60"  
**150x75** 60"x30"  
**75x75** 30"x30"

**300x100** 120"x40"  
**150x100** 60"x40"  
**100x100** 40"x40"

**6mm** THICKNESS  
**SOFT** FINISH

AVAILABLE FACES



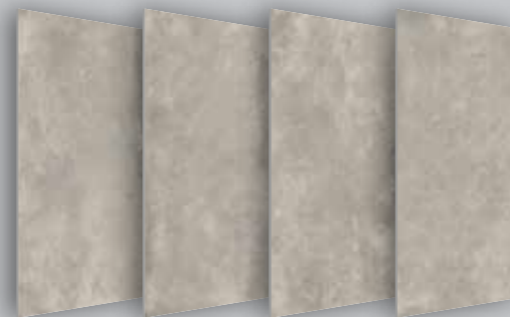
# CLOUD

**300x150** 120"x60"  
**150x150** 60"x60"  
**150x75** 60"x30"  
**75x75** 30"x30"

**300x100** 120"x40"  
**150x100** 60"x40"  
**100x100** 40"x40"

**6mm** THICKNESS  
**SOFT** FINISH

AVAILABLE FACES



# TALC

**300x150** 120"x60"  
**150x150** 60"x60"  
**150x75** 60"x30"  
**75x75** 30"x30"

**300x100** 120"x40"  
**150x100** 60"x40"  
**100x100** 40"x40"

**6mm** THICKNESS  
**SOFT** FINISH

AVAILABLE FACES



# EARTH

**300x150** 120"x60"  
**150x150** 60"x60"  
**150x75** 60"x30"  
**75x75** 30"x30"

**300x100** 120"x40"  
**150x100** 60"x40"  
**100x100** 40"x40"

**6mm** THICKNESS  
**SOFT** FINISH

AVAILABLE FACES

